

VENTURE OUT

A RESUBDIVISION OF TRACT "A" OF "CUDJOE OCEAN SHORES" (PDS-1707)
 LYING IN GRAY LOTS 243-SECTION 34-TOWNSHIP 66R-RANGE 26S
 CUDJOE KEY MOULDER COUNTY FLORIDA

C. G. DUNLEY & ASSOCIATES
 LAND SURVEYORS
 WASHINGTON FLORIDA
 DECEMBER 1978

KNOW ALL MEN BY THESE PRESENTS
 That I, Paul E. Sawyer, of the County of MOULDER, State of FLORIDA, do hereby certify that the above described land is my own and lawful property and that I am the sole owner thereof and that I have no interest therein other than that of the owner thereof.

My commission expires August 11, 1982.
Paul E. Sawyer
 State of Florida
 My commission expires August 11, 1982.
Paul E. Sawyer
 State of Florida

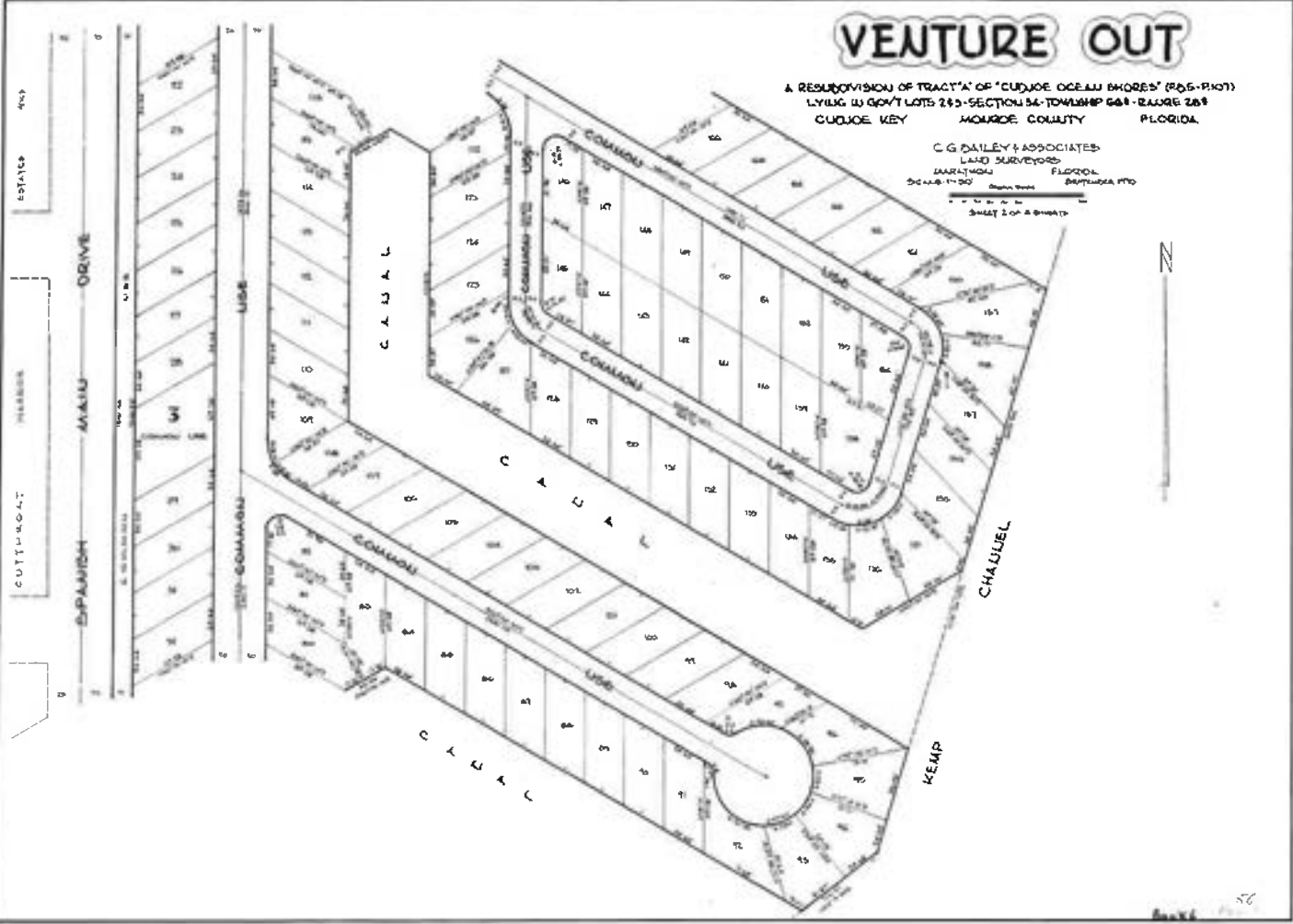
My commission expires August 11, 1982.
Paul E. Sawyer
 State of Florida

My commission expires August 11, 1982.
Paul E. Sawyer
 State of Florida

VENTURE OUT

A RESUBDIVISION OF TRACT "A" OF "CUDDO OCEAN SHORES" (P.D. 6-1407)
LYING IN GOVT LOTS 245-SECTION 36-TOWNSHIP 66N-RANGE 28E
CUDDO KEY HIGHLAND COUNTY FLORIDA

C.G. DAILEY & ASSOCIATES
LAND SURVEYORS
DAIRYMOON FLORIDA
SINCE 1970
SHEET 2 OF 4 SHEETS

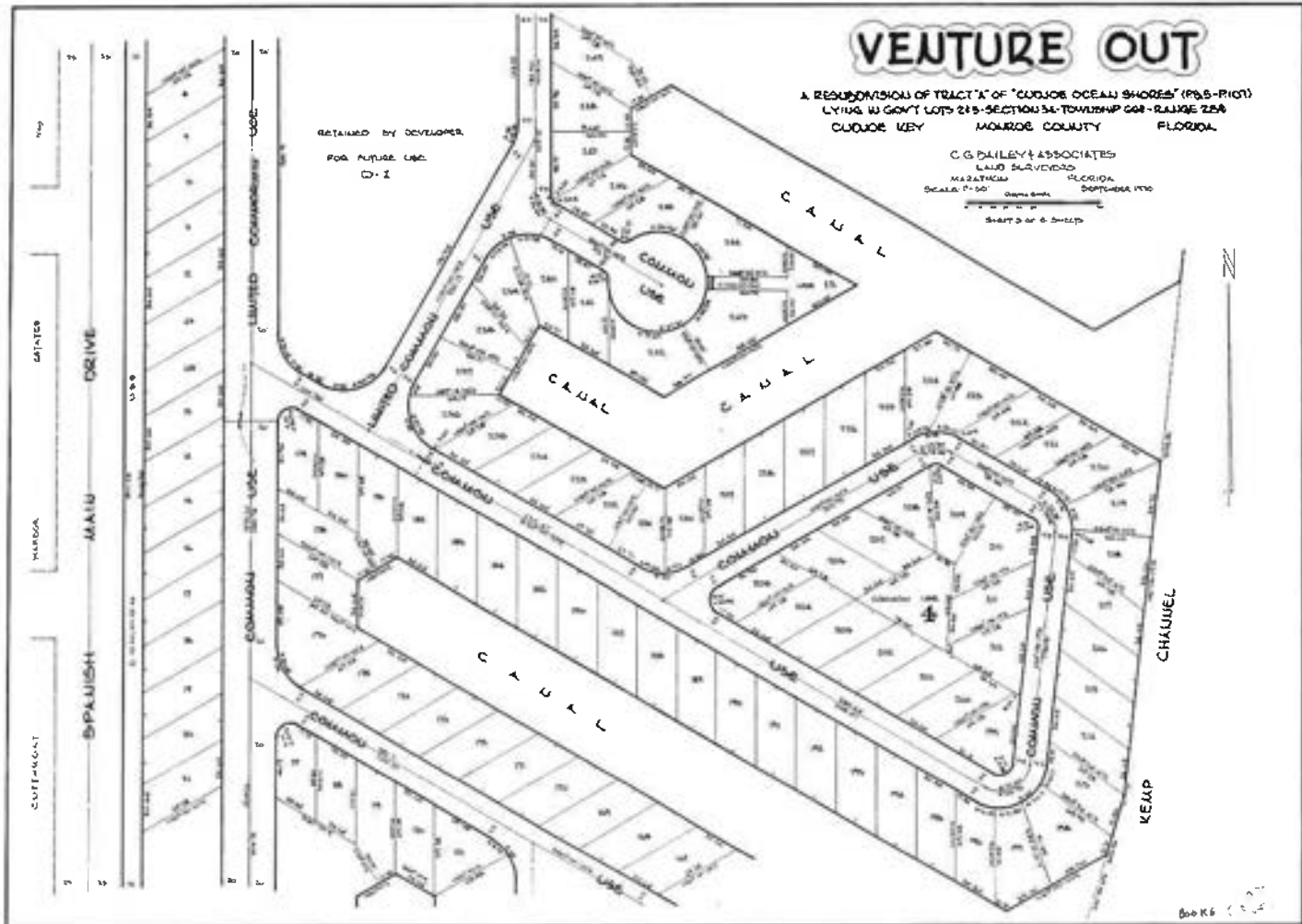


VENTURE OUT

A RECONFIGURATION OF TRACT "A" OF "CURJORE OCEAN SHORES" (PDS-18101)
LYING IN GOVT LOTS 215-SECTION 34-TOWNSHIP 008-RANGE 258
CURJORE KEY MONROE COUNTY FLORIDA

C. G. DAILEY & ASSOCIATES
LAND SURVEYORS
MARATHON FLORIDA
SCALE: 1" = 50' (approx) DATE: SEPTEMBER 1970
SHEET 3 OF 6 SHEETS

RETAINED BY DEVELOPER
FOR FUTURE USE
D-1

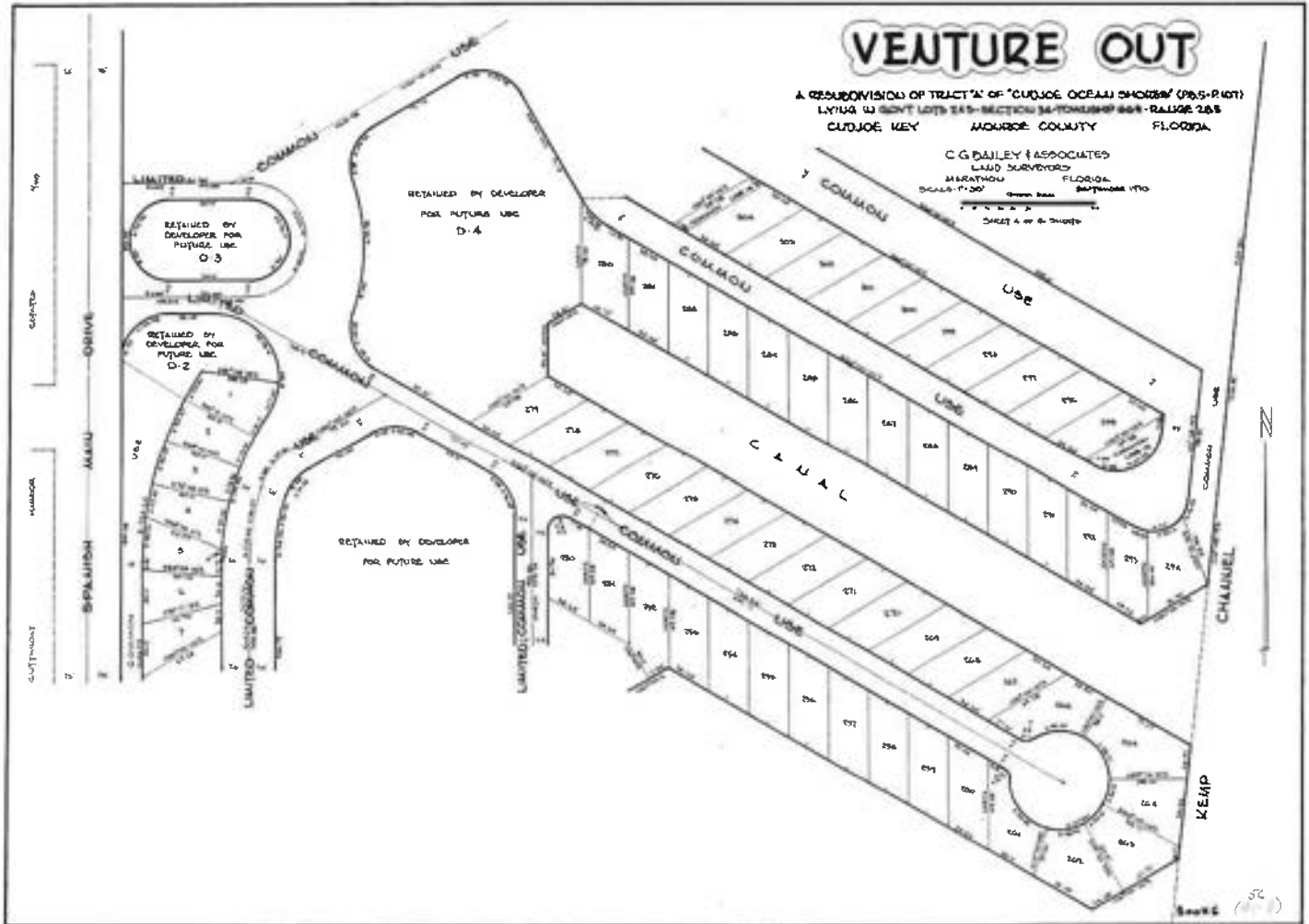


800 K6

VENTURE OUT

A RESUBDIVISION OF TRACT "A" OF "CUDJOE OCEAN SHORES" (P.B.S. 1407)
L.V. 144 W. 30' N. 10' E. 1/4 SEC. 34 - T. 10 N. R. 10 E. - RANGE 26 S
CUDJOE KEY HONOLULU COUNTY FLORIDA

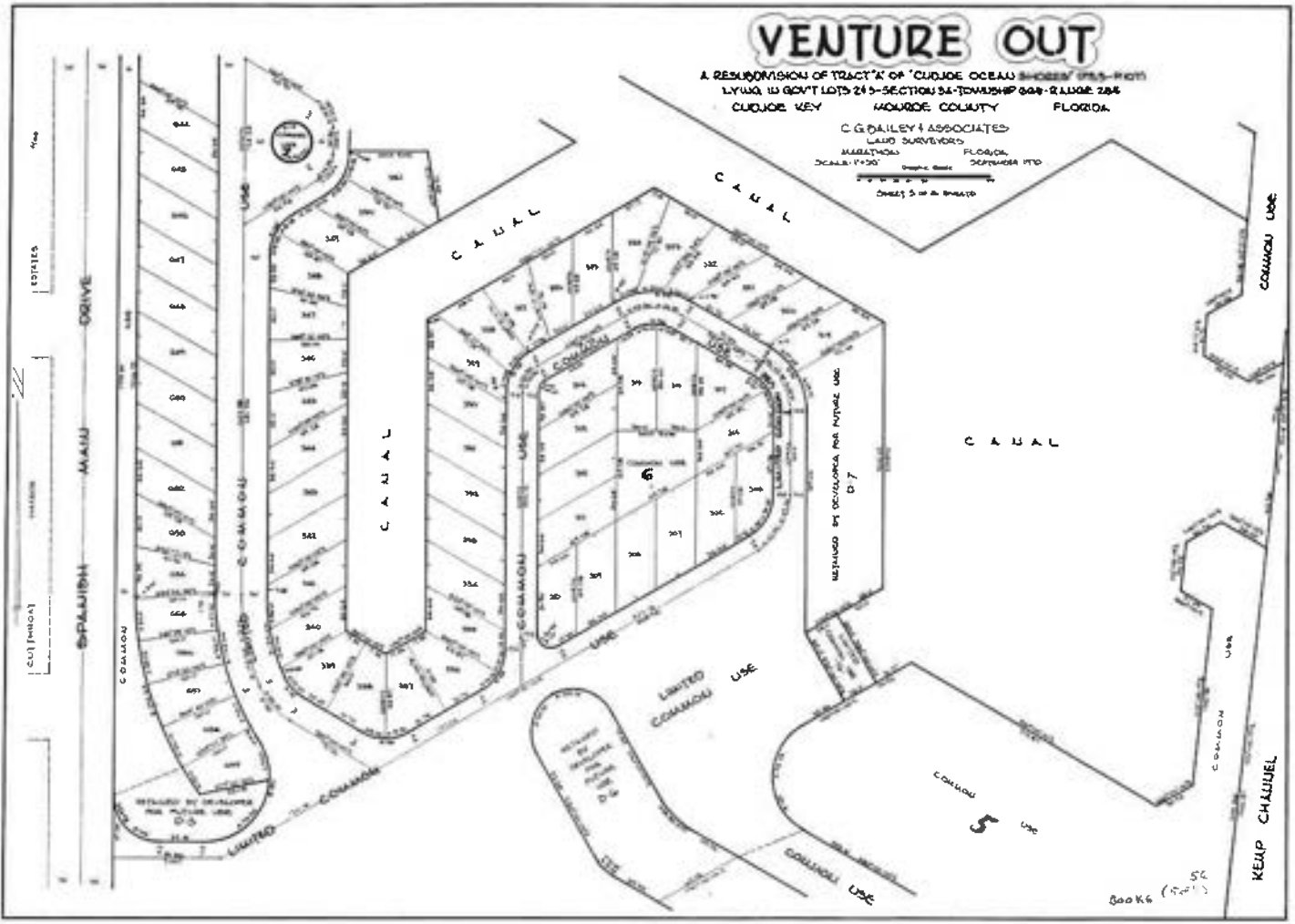
C. G. BAILEY & ASSOCIATES
LAND SURVEYORS
MARATHON FLORIDA
SCALE: 1" = 200'
DATE: 11/10/70
SHEET 4 OF 6 SHEETS



VENTURE OUT

A RESUBDIVISION OF TRACT "A" OF "CUJOE OCEAN SHORES" (P.L. 85-1101)
 LYING IN GOVT LOTS 24 & 25-SECTION 24-TOWNSHIP 04N-RANGE 28E
 CUJOE KEY MOULDER COUNTY FLORIDA

C. G. DALLEY & ASSOCIATED
 LAND SURVEYORS
 MIAMI, FLORIDA
 DECEMBER 1970
 SCALE: 1"=200' Graph Scale
 SHEET 5 OF 4 SHEETS

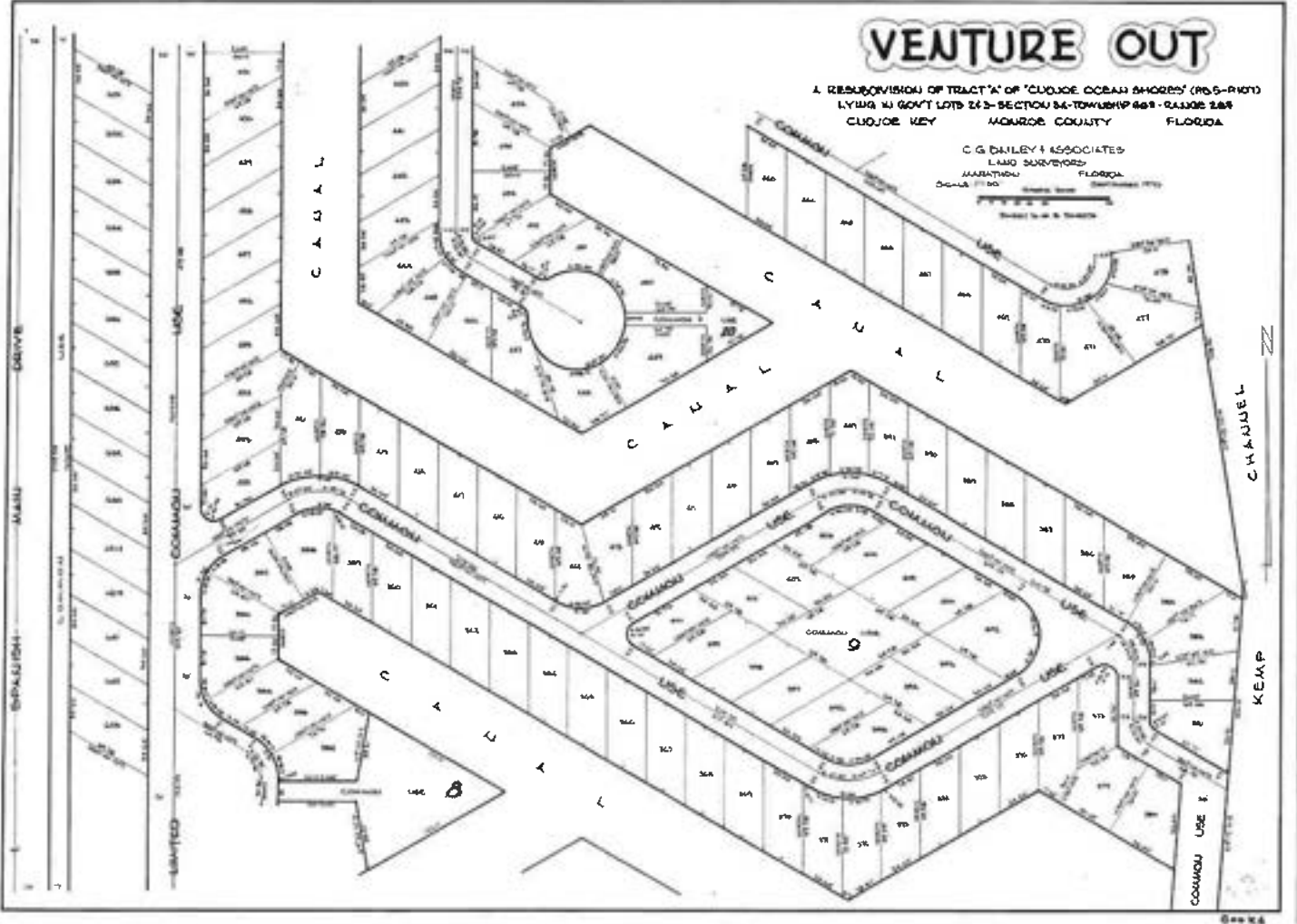


50
 500 K6 (70')

VENTURE OUT

A RESUBDIVISION OF TRACT "A" OF "CLUJOC OCEAN SHORES" (PL 6-1910)
LYING IN GOVT LOTS 243-SECTION 36-TOWNSHIP 46S-RANGE 26E
CLUJOC KEY MOHAWK COUNTY FLORIDA

C G DANLEY & ASSOCIATES
LAND SURVEYORS
MARATHON FLORIDA
SINCE 1950
SINCE 1948 S. THORNTON

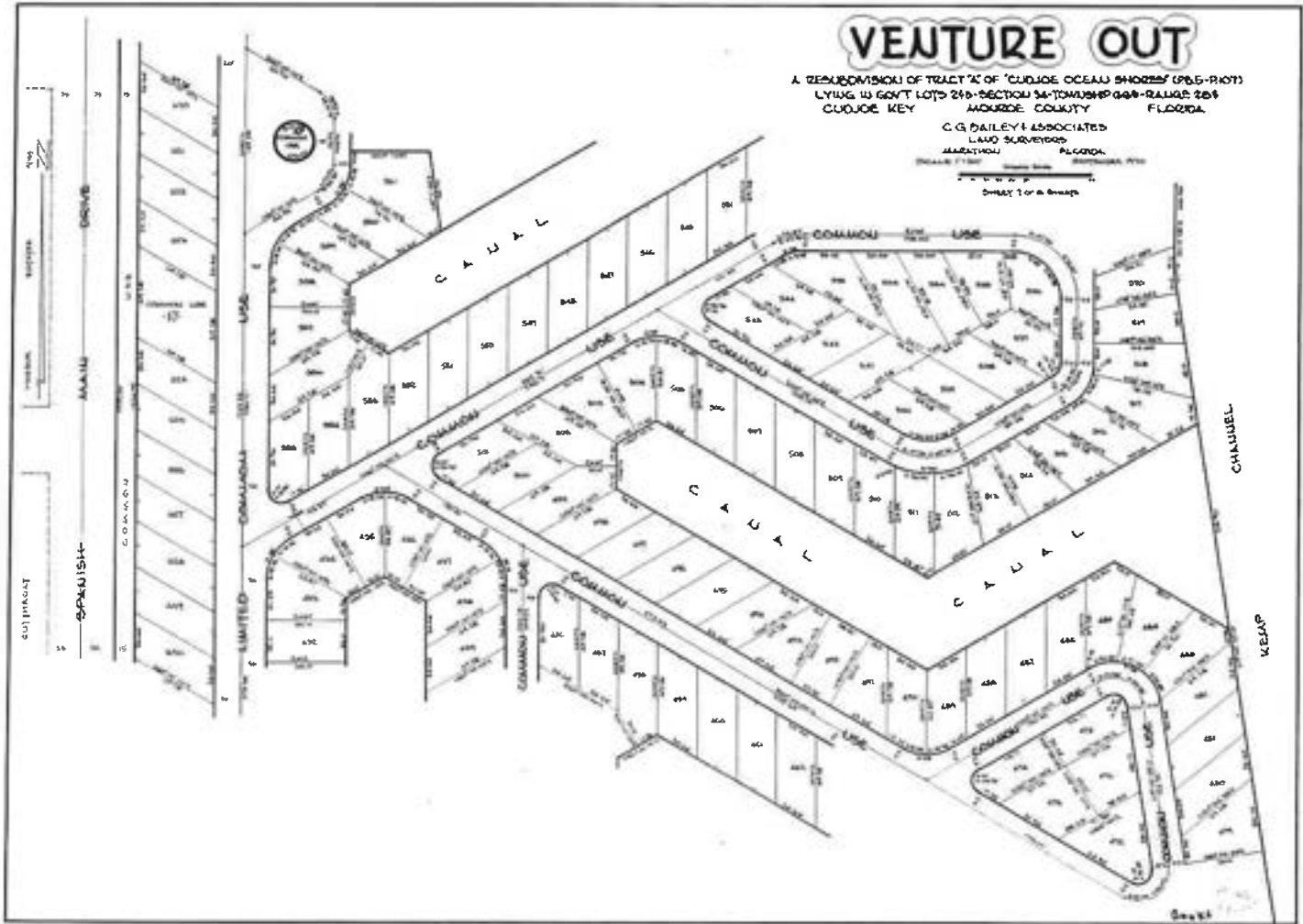


VENTURE OUT

A RESUBDIVISION OF TRACT "A" OF "CUJOIE OCEAN SHORES (P.B.S.-PLOT)
LYING IN GOVT LOT 215-SECTION 34-TOWNSHIP 04N-RANGE 20E
CUJOIE KEY MOHAWK COUNTY FLORIDA

C. G. BAILEY & ASSOCIATED
LAND SURVEYORS
MARATHON ALABAMA

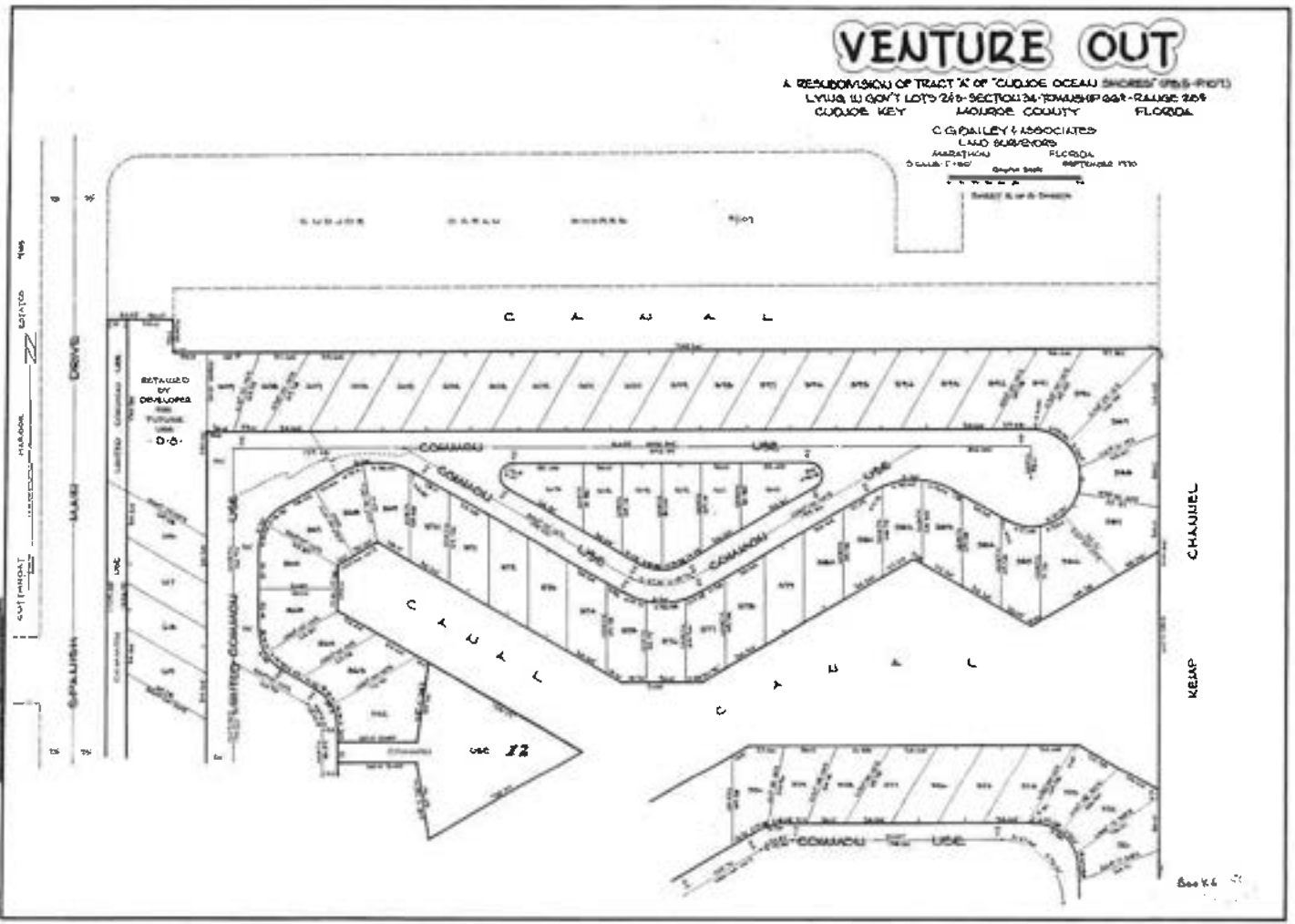
SCALE: 1" = 100' (AS SHOWN)
DATE: 11/15/88
SHEET 1 OF 2 SHEETS



VENTURE OUT

A REVISION/AMENDMENT OF TRACT "A" OF "CLUJDE OCEAN SHORES" (P&S-P&T)
 LYING IN CERTAIN LOTS 217-SECTION 34-TOWNSHIP 68R-RANGE 20S
 CLUJDE KEY MOHAWK COUNTY FLORIDA

C. G. BAILEY & ASSOCIATES
 LAND SURVEYORS
 SUWANNEE FLORIDA
 SCALE: 1" = 100' DATE: SEPTEMBER 1970
 SHEET 2 OF 2 SHEETS

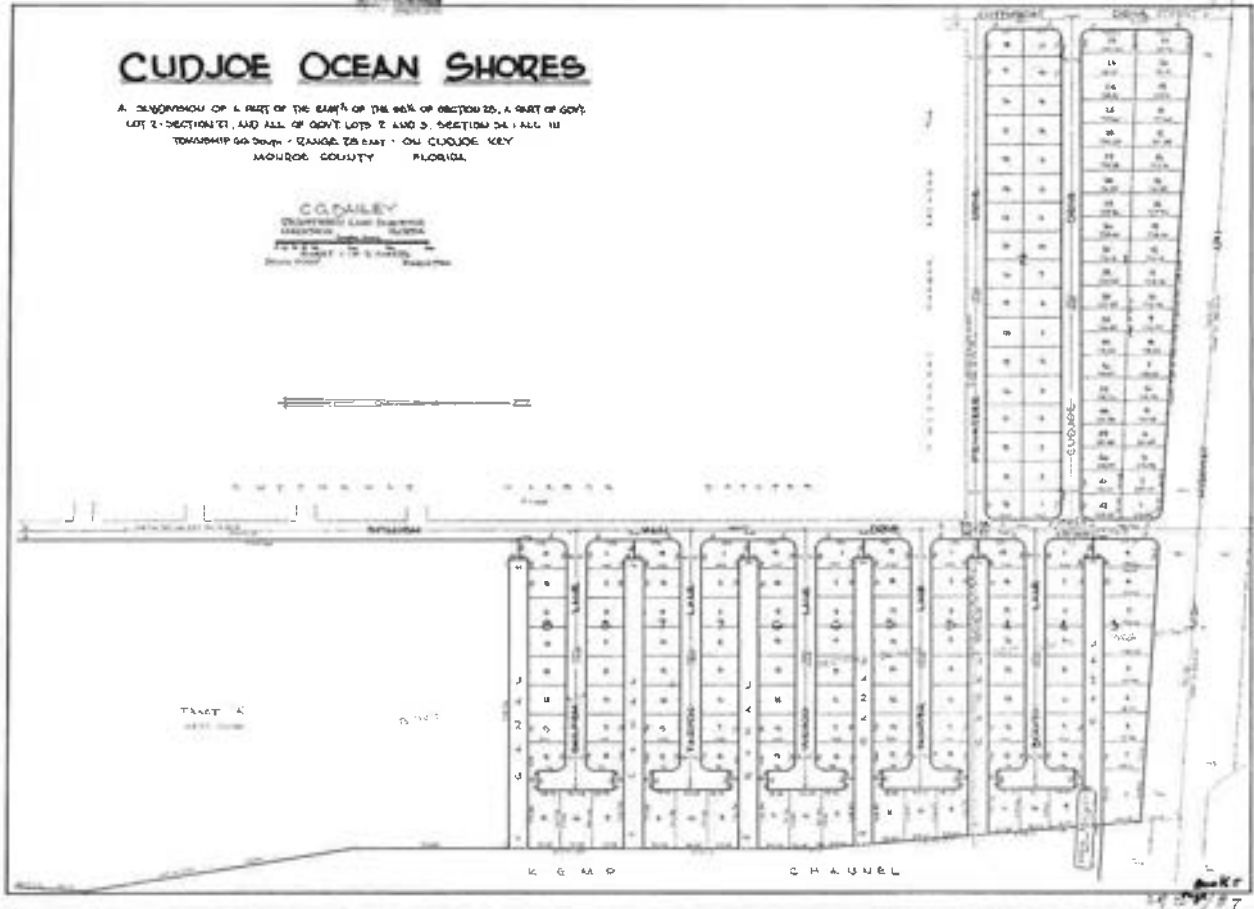


See P. 6

CUDJOE OCEAN SHORES

A SUBDIVISION OF A PART OF THE EAST 1/4 OF THE SW 1/4 OF SECTION 20, A PART OF GOVT. LOT 2 - SECTION 21, AND ALL OF GOVT. LOTS 2 AND 3 - SECTION 24 - ALL IN TOWNSHIP 24 SOUTH - RANGE 28 EAST - ON CUDJOE KEY MONROE COUNTY FLORIDA

C. D. DAILEY
 REGISTERED LAND SURVEYOR
 MONROE COUNTY, FLORIDA
 112 S. G. ST. - TAMPA, FLORIDA



14 27 87